

Curtains Up® traverse rods

Curtains Up® now offers hand draw traverse rods in 1" and 1½" diameter, for those challenging installations where an unobstructed flow of curtains is needed.

Using top mounted brackets you can now install lengths of 8' or more without brackets interfering with the curtain flow. Top mounted brackets are first attached to the wall. Then the traverse rod is connected by tightening the Hex head screw (key supplied) to lock the rod in place. Rods can be connected for greater length when needed.

A fling rod is recommended for use with these new glides and master carriers for ease of operation and minimum curtain wear. A large roller glide is suggested for the 1½" diameter rod as it easily handles heavier treatments. A smaller nylon glide fits with both size rods for use with lighter weight curtains.

Master carriers with either overlap or standard arms are available. The direction of each arm is adjustable to either a left or right orientation.

Curtains Up® finials that fit over 1" or 1½" diameter rods will lock onto the new traverse rods. If a screw-in finial is selected, simply install the plastic plug into the end of the 1½" traverse rods. Please note that screw-in finials are not offered for 1" diameter rods. End stops are available to hold the curtains in position at either end of the traverse rod. Hand draw traverse rods are available for most Curtains Up® painted finishes.

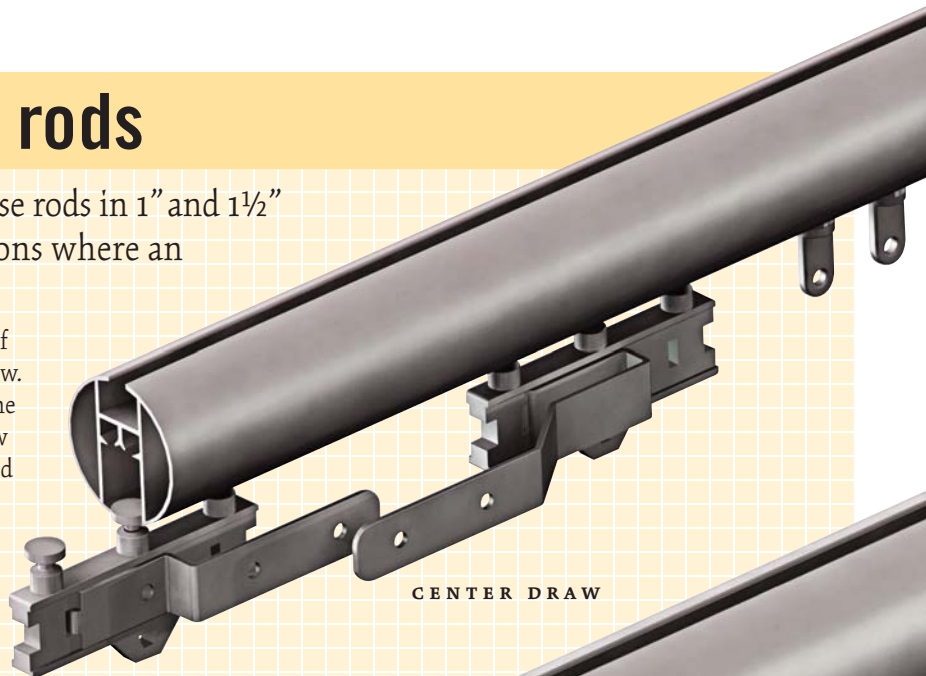
Rods available in lengths of 4', 8' and 10'

Large roller glides & small nylon glides are sold in packages of 10 pieces

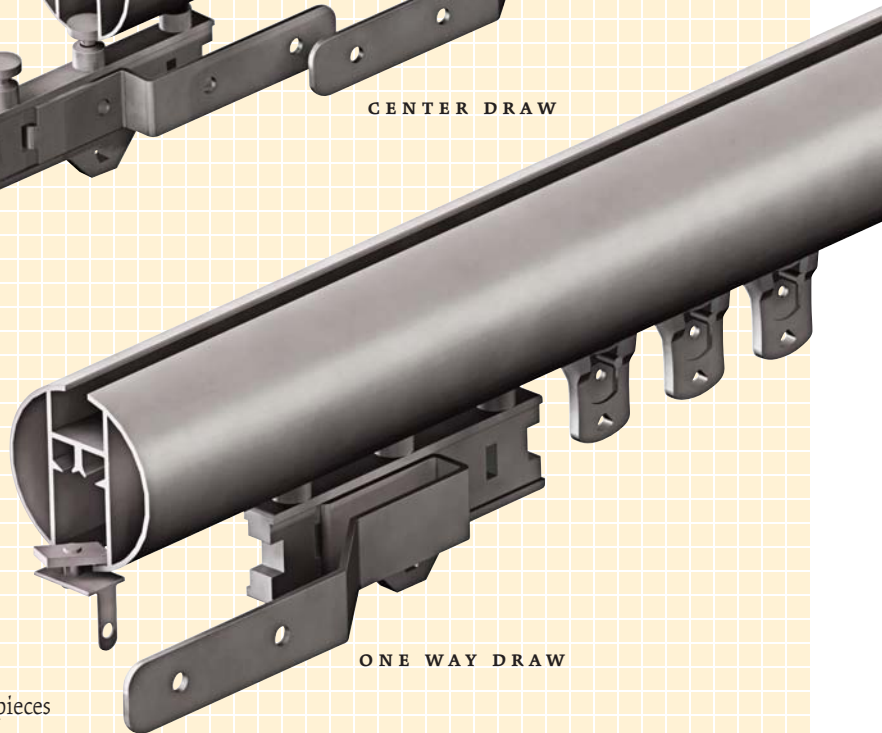
Master carriers with arm (Standard or Overlap) are sold individually

End stops are sold in pairs

Top mount brackets are sold individually



CENTER DRAW



ONE WAY DRAW

TRAVERSE SYSTEM PARTS



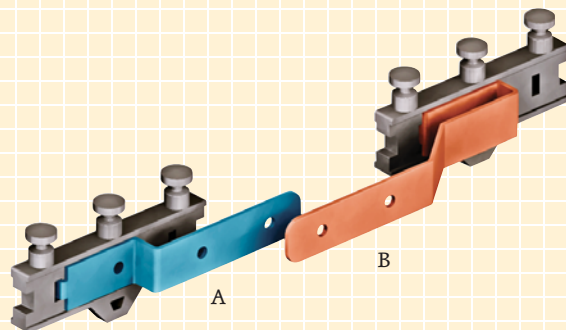
SMALL GLIDE



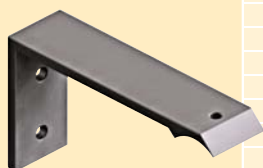
LARGE GLIDE



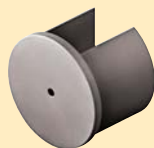
END STOP



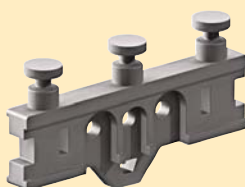
A) MASTER CARRIER WITH STANDARD ARM
B) MASTER CARRIER WITH OVERLAP ARM
BOTH ADJUSTABLE TO LEFT/RIGHT ORIENTATION



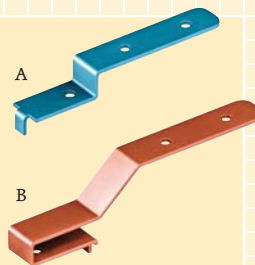
TOP MOUNT BRACKET



PLASTIC PLUG 1½"



MASTER CARRIER BODY



A

B

